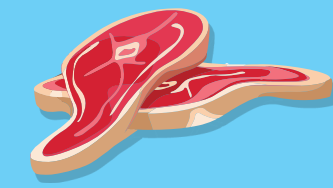


VODA

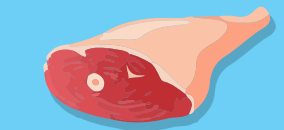
**Kolik litrů vody
se spotřebuje
na výrobu...**



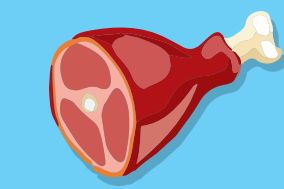
Kolik litrů vody se spotřebuje na výrobu...



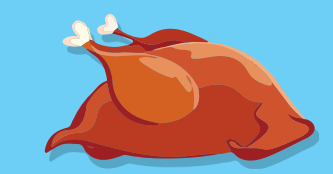
15000 l
1 kg hovězího



9000 l
1 kg škopového



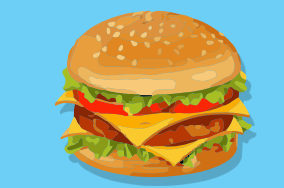
6000 l
1 kg vepřového



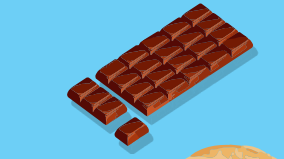
4300 l
1 kg kuřecího



3000 l
1 kg syru



2500 l
1 hamburger



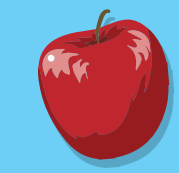
1700 l
1 tabulka čokolády



1600 l
1 kg chleba



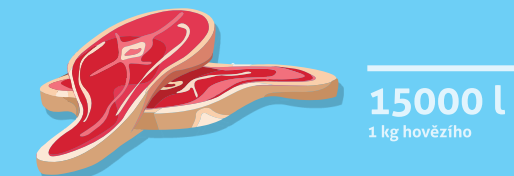
1200 l
1 pizza



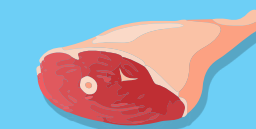
500 l
2kg jablek

Plakát 30×135 cm umístěný ve školních jídelnách

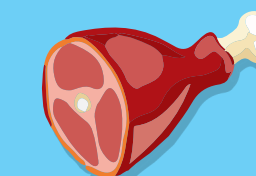
Kolik litrů vody
se spotřebuje
na výrobu...



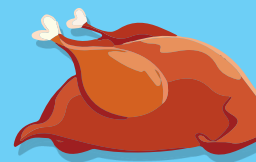
15000 l
1 kg hovězího



9000 l
1 kg škopového



6000 l
1 kg vepřového



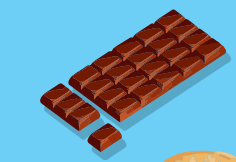
4300 l
1 kg kuřecího



3000 l
1 kg syru



2500 l
1 hamburger



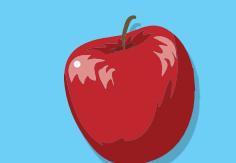
1700 l
1 tabulka čokolády



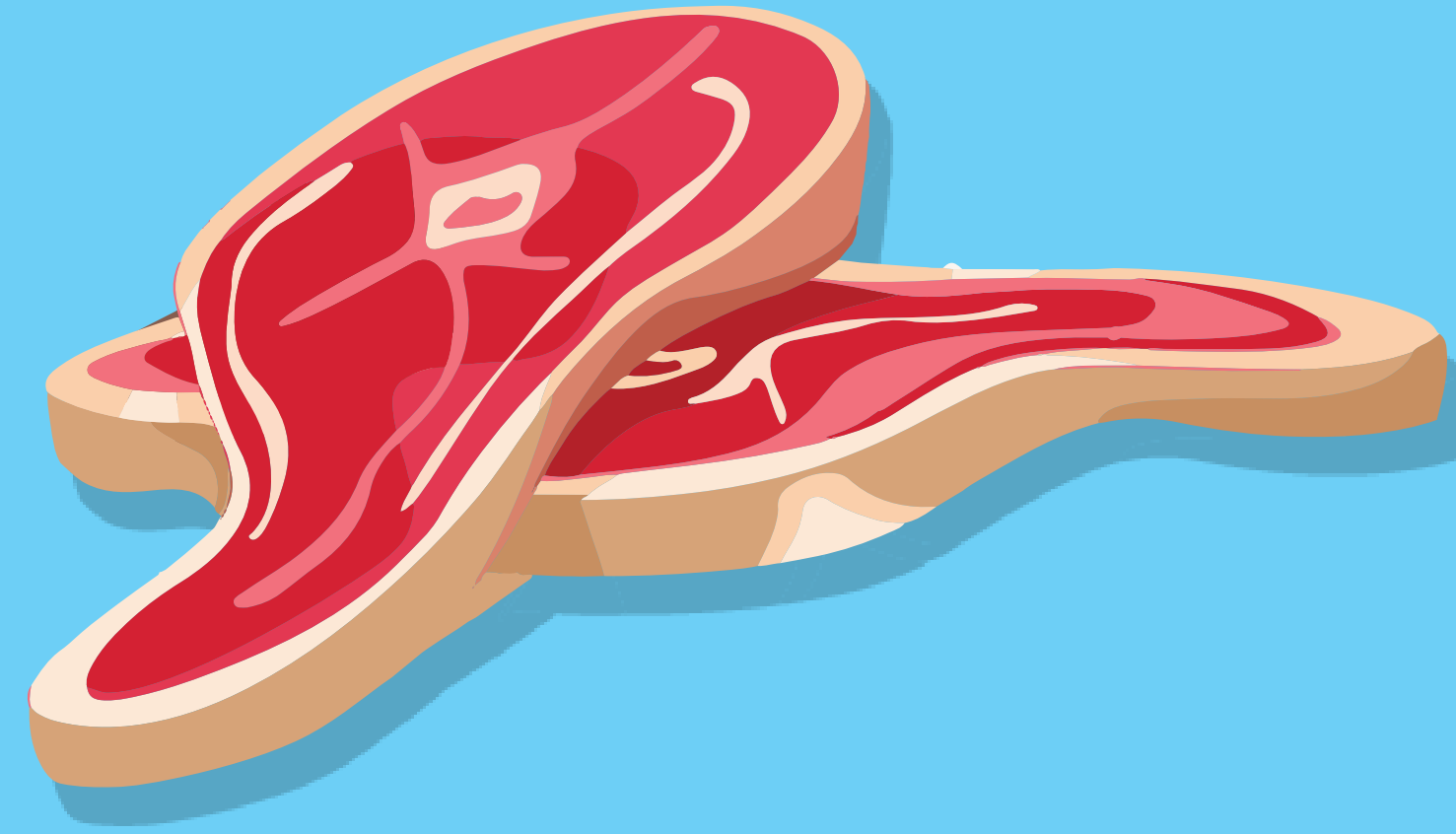
1600 l
1 kg chleba



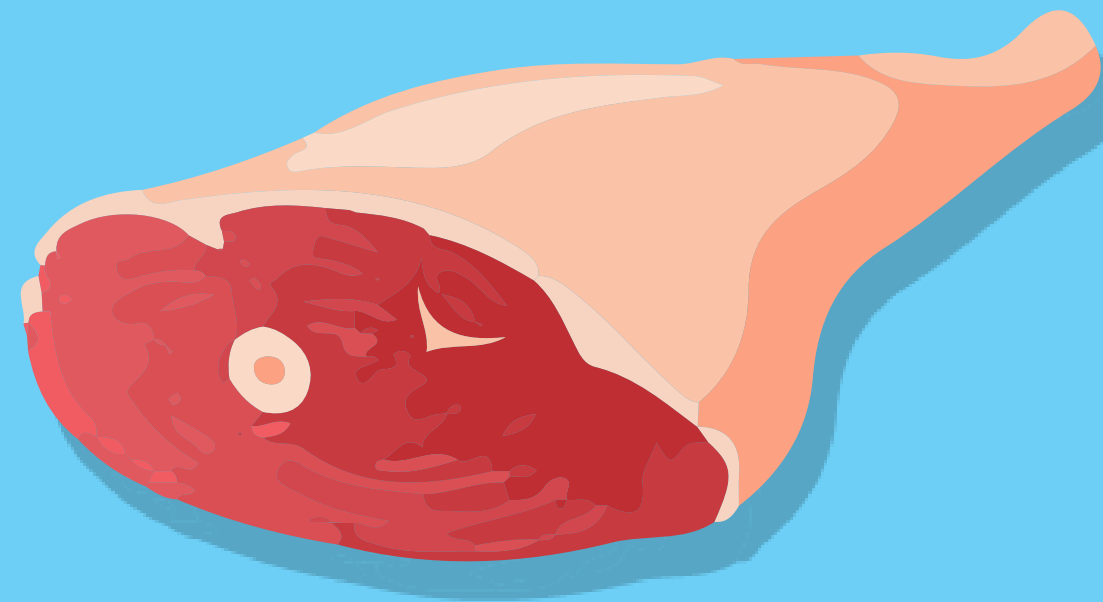
1200 l
1 pizza



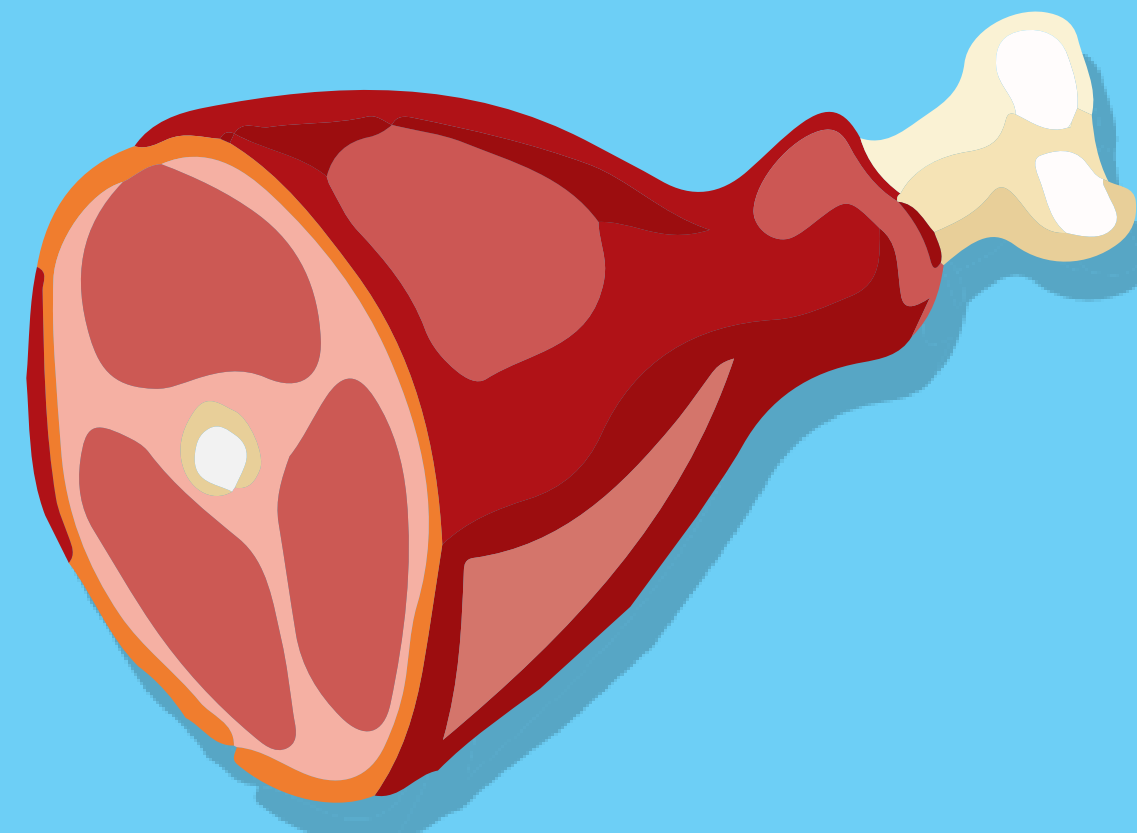
500 l
2kg jablek



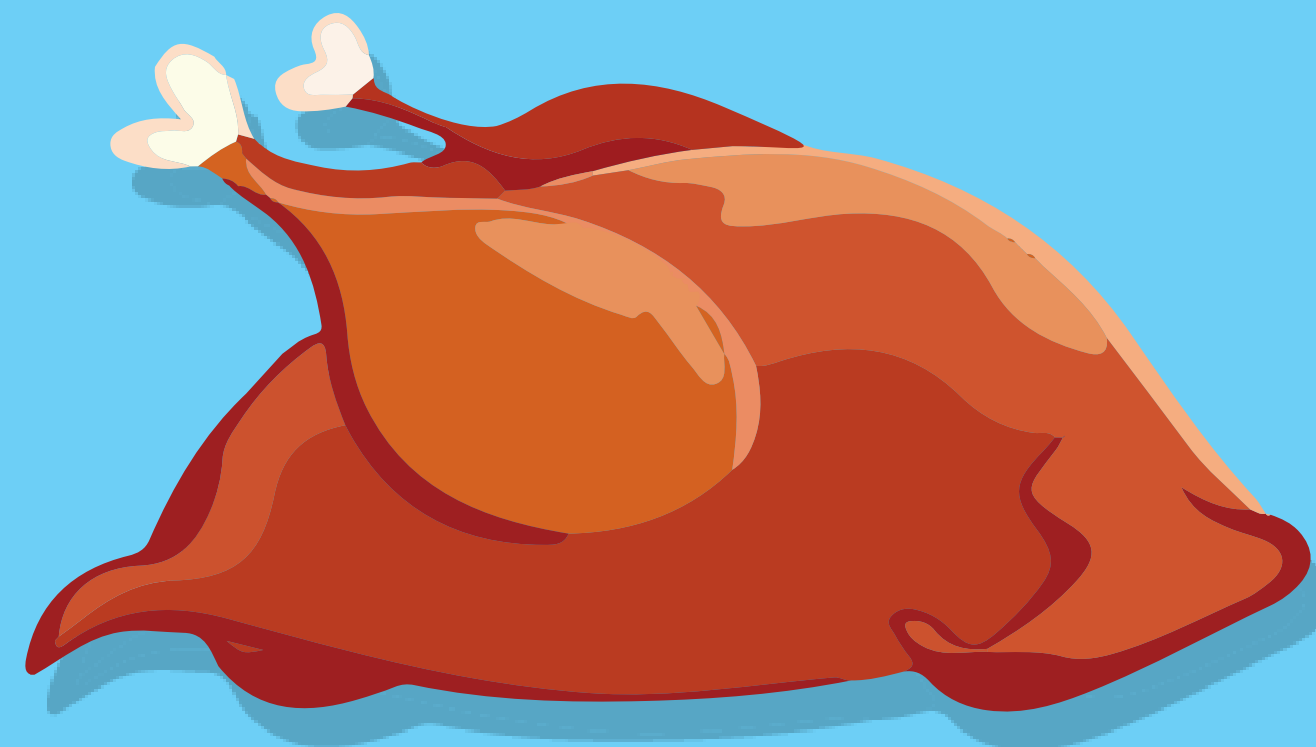
15000 l
1 kg hovězího



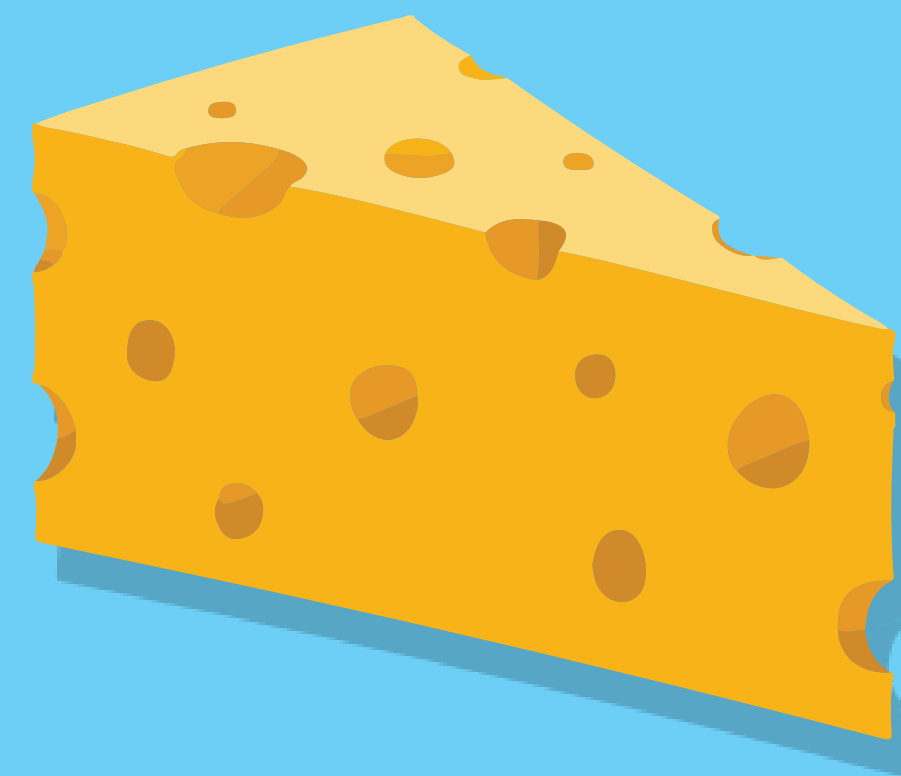
9000 l
1 kg skopového



6000 l
1 kg vepřového



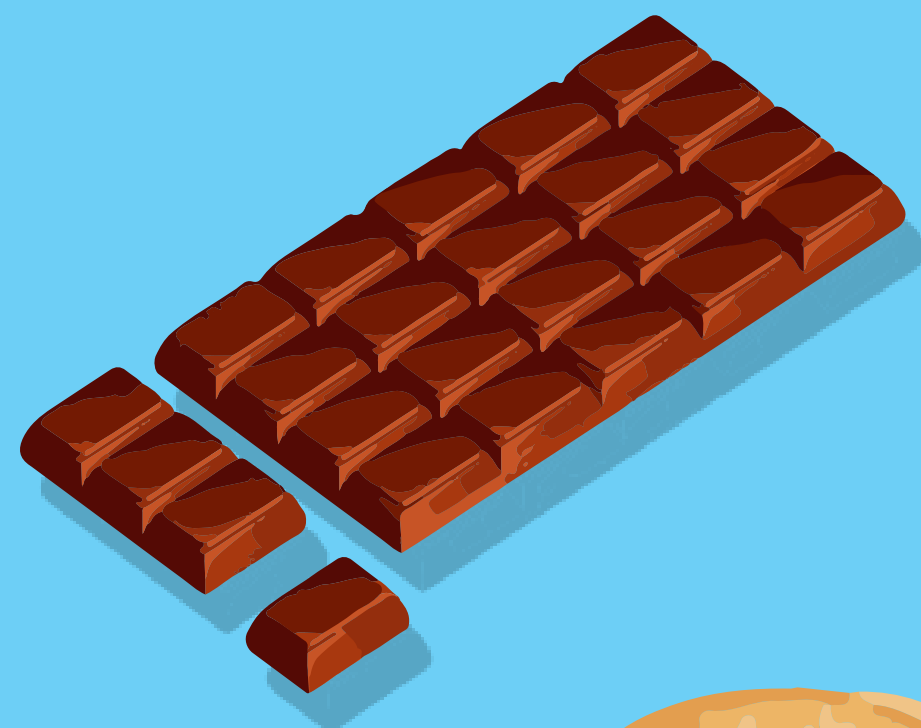
4300 l
1 kg kuřecího



3000 l
1 kg sýru



2500 l
1 hamburger



1700 l
1 tabulka čokolády



1600 l
1 kg chleba



1200 l
1 pizza

Děkuji za pozornost