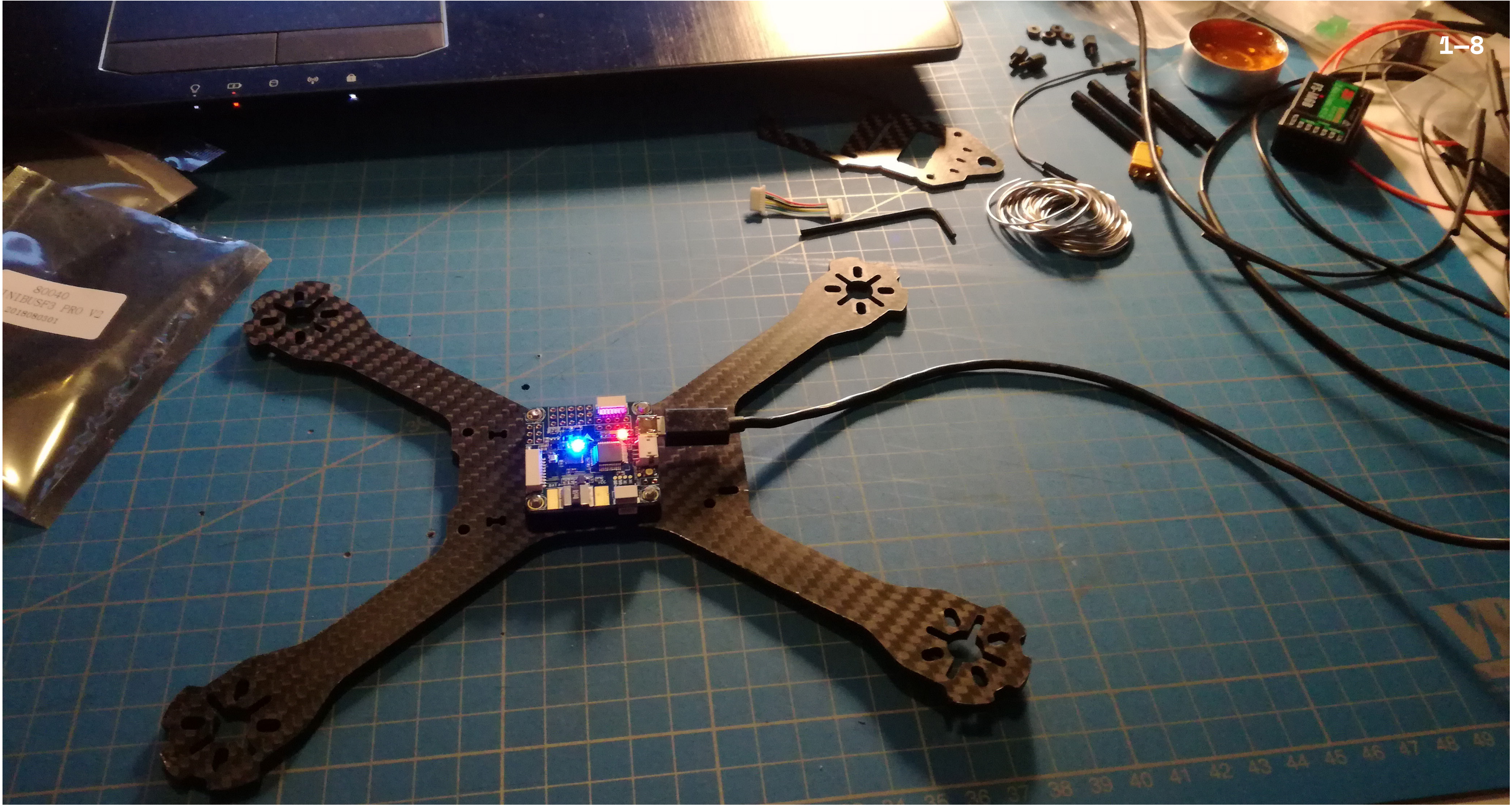
The background of the image is a technical drawing of a PCB layout. It shows various components like resistors (R27, R24, R22, R17, R15, R16, R18, R12, R11, R13, R14), capacitors (C23, C12, C11, C10, C9, C8, C7, C6, C5, C4, C3, C2, C1), and integrated circuits (U7, U6, U5, U4, U3, U2, U1). There are also labels for power planes (VCC, GND, AGND) and other components like RAM, I2C, and I2S. The drawing is in black lines on a white background.

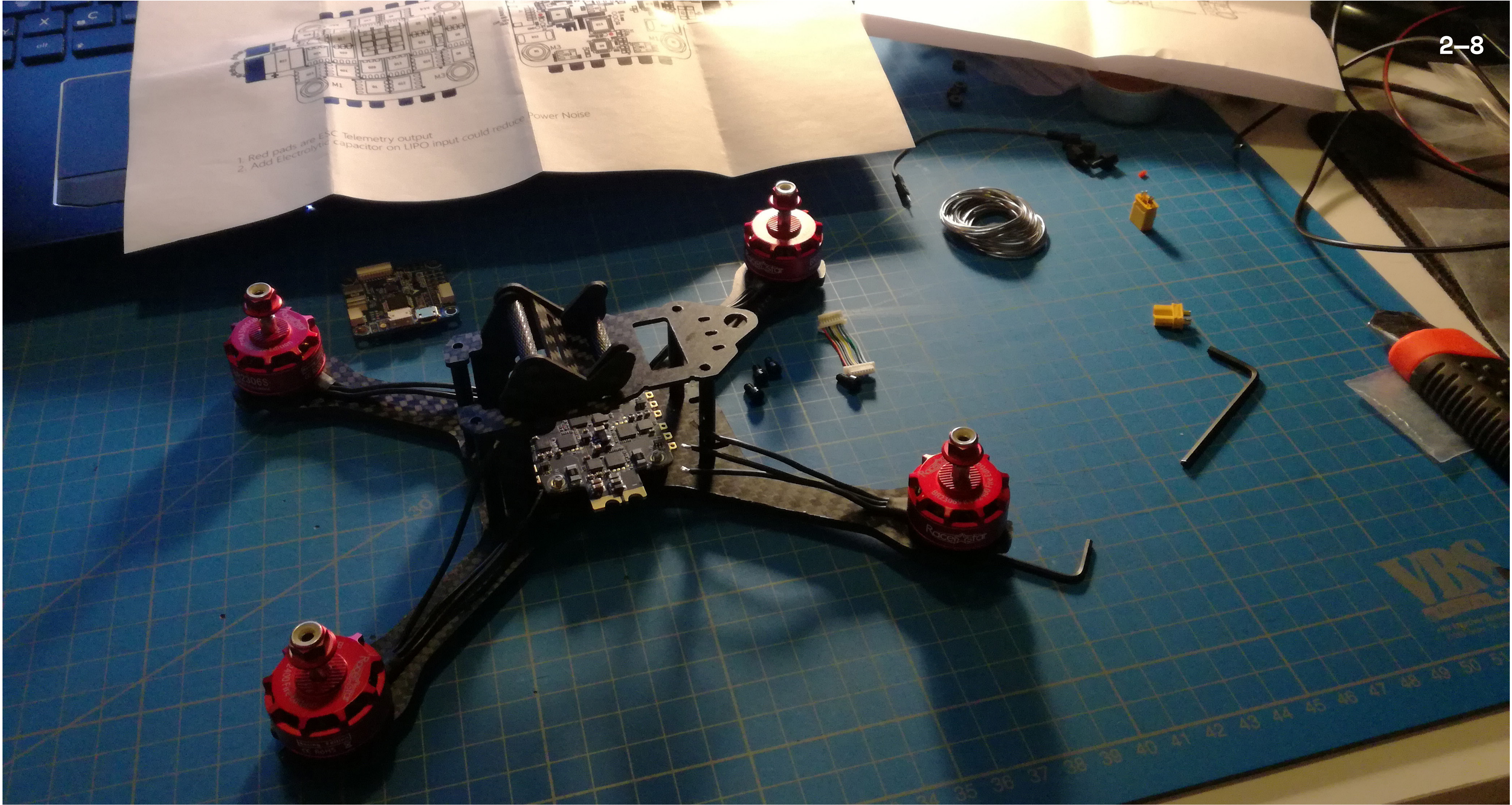
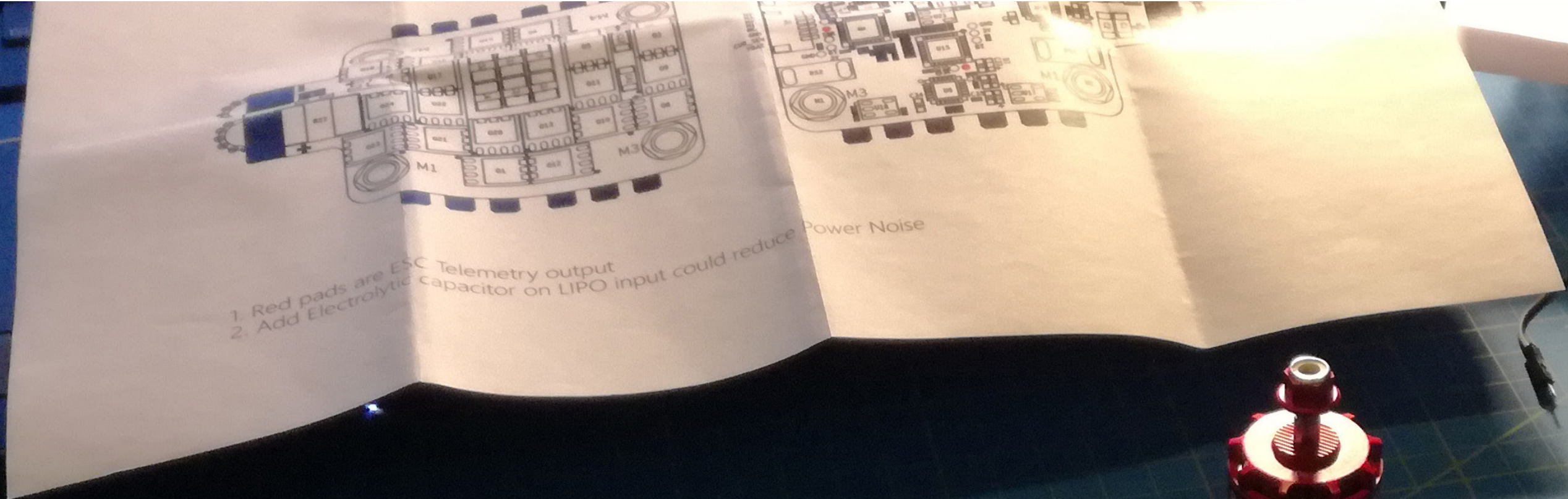
VOLNÉ_ZADANIE

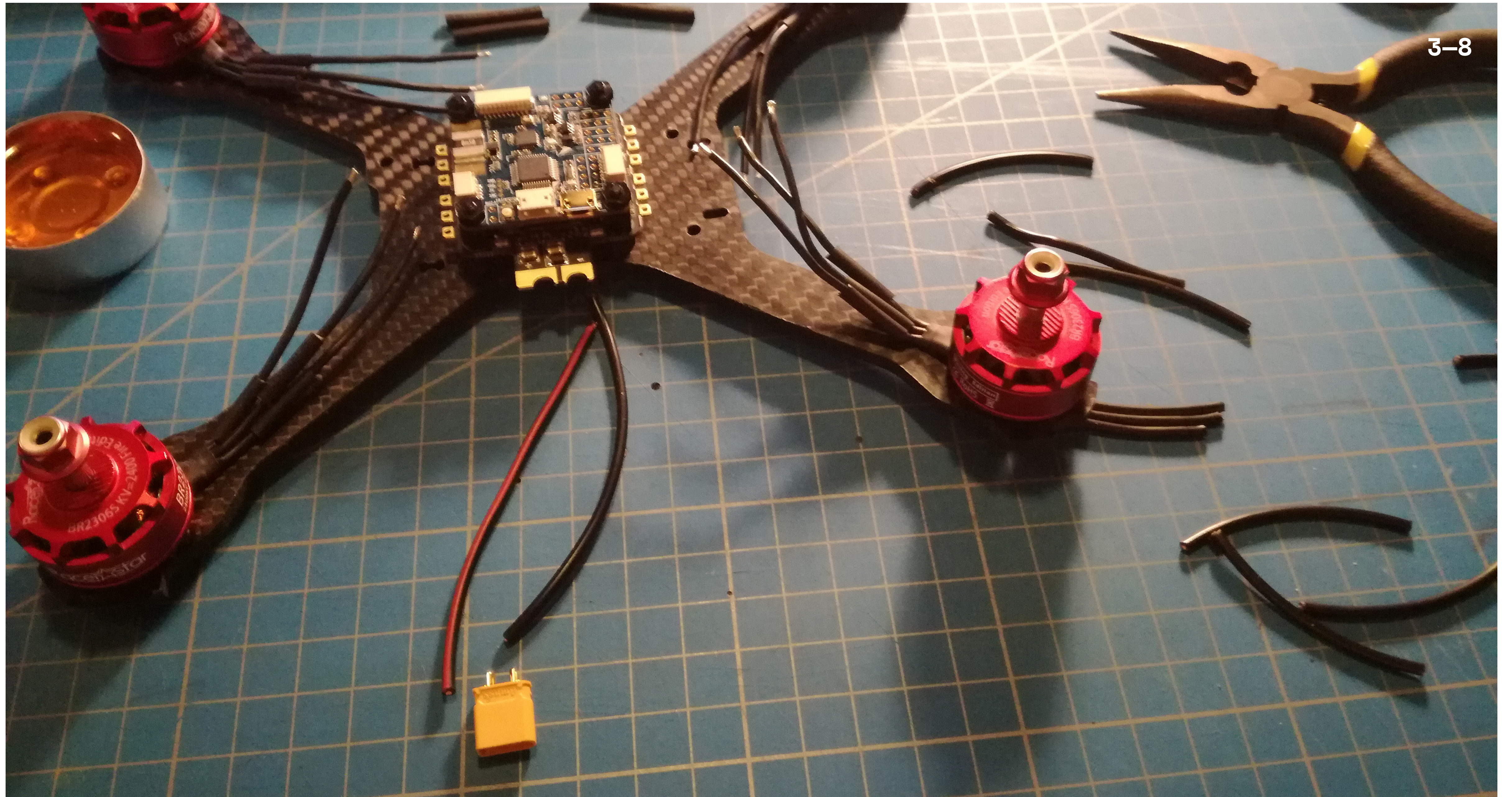
2_R_MGA_DD_2018/2019
UTB_FMK_ZLIN

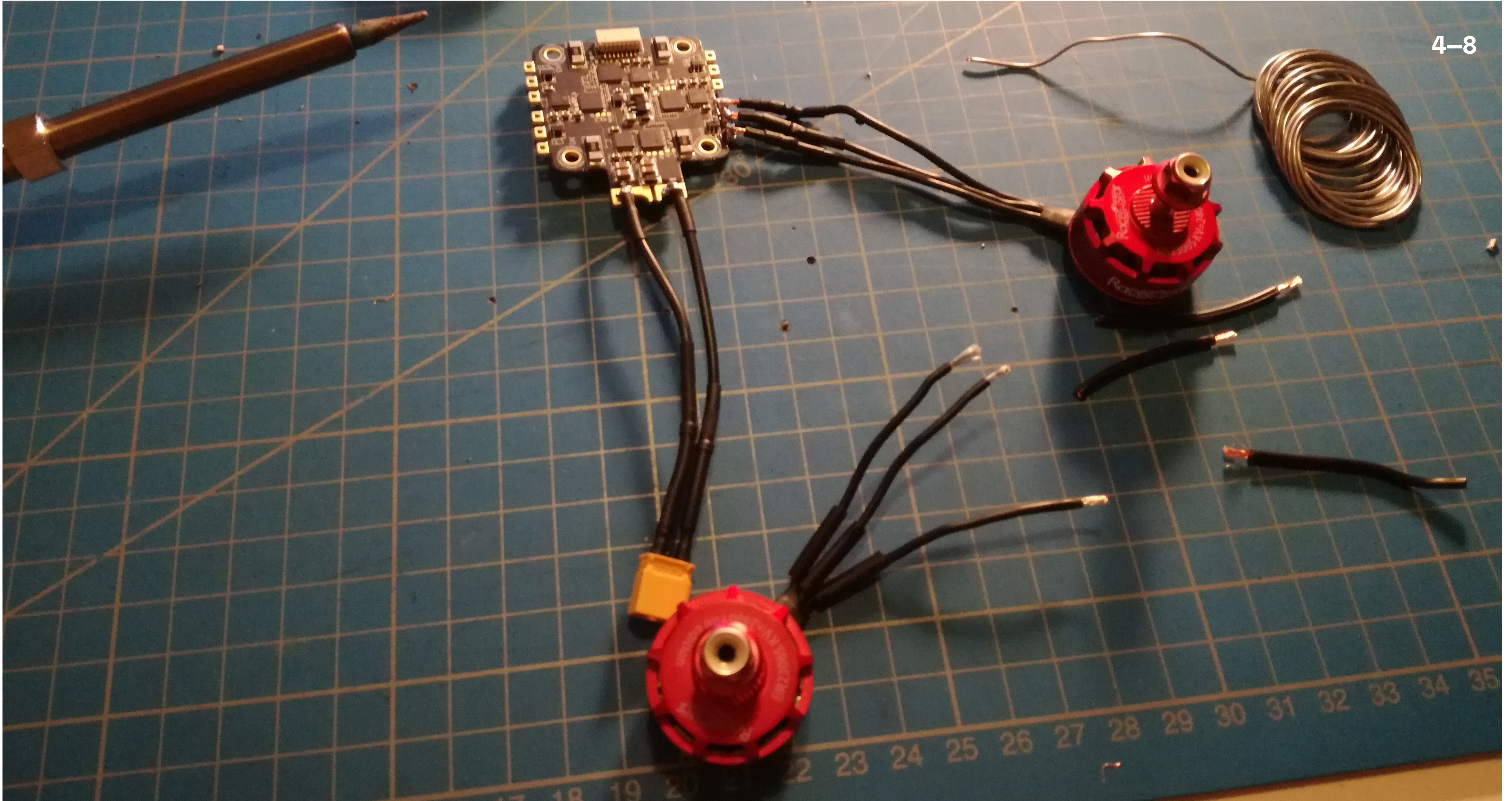
DRON_TEST_V_01

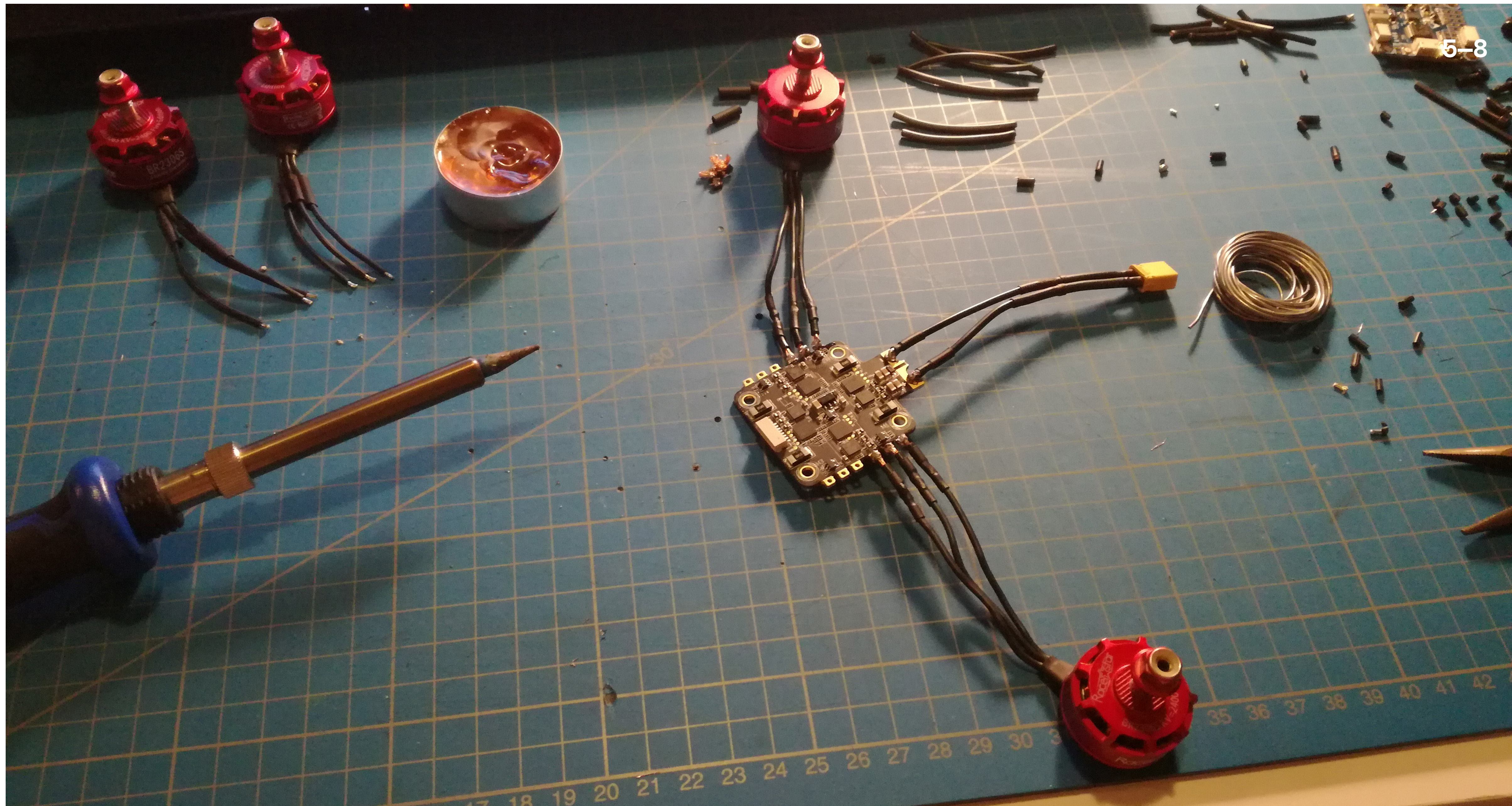
MICHAL_PENXA

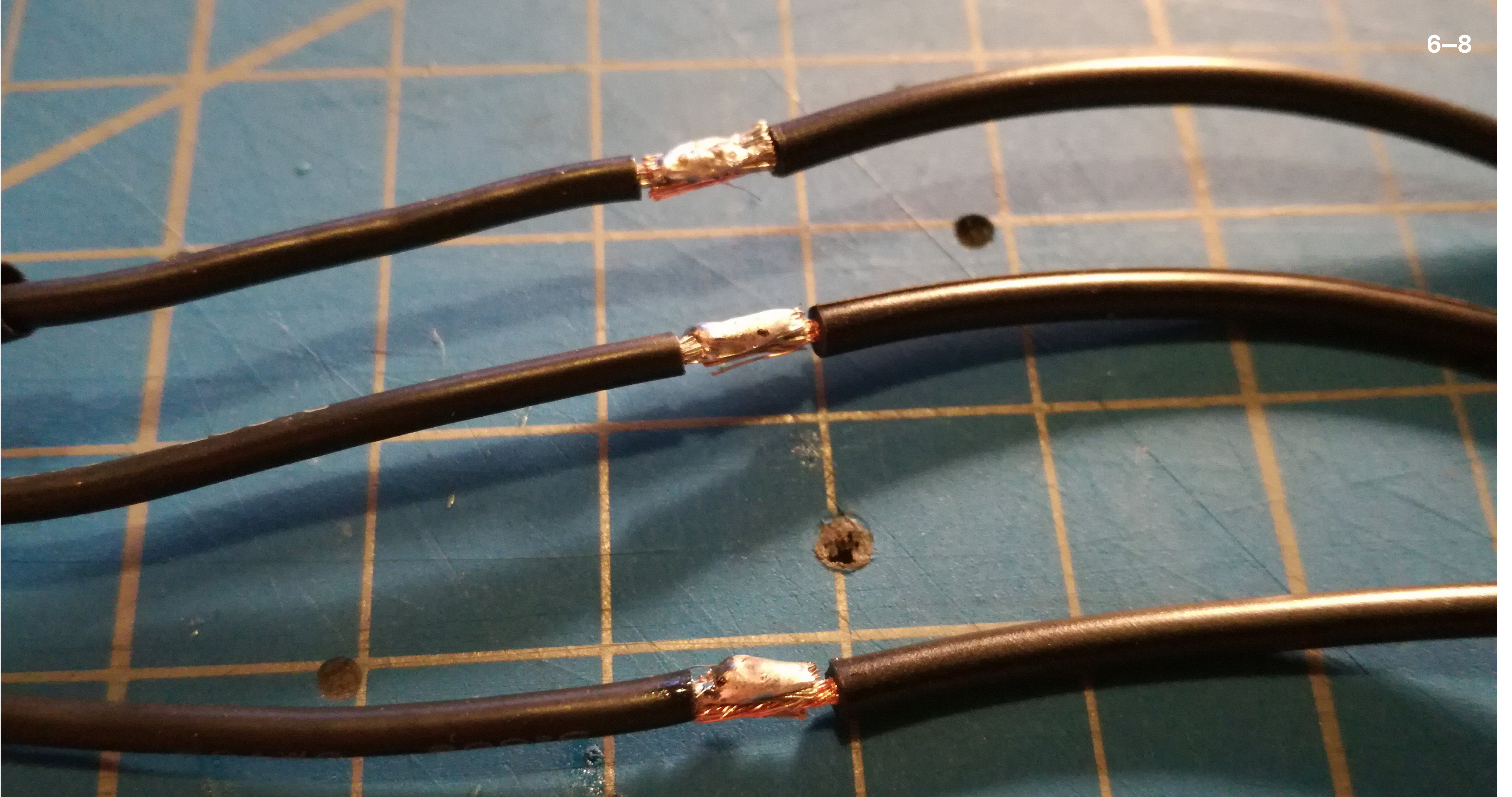


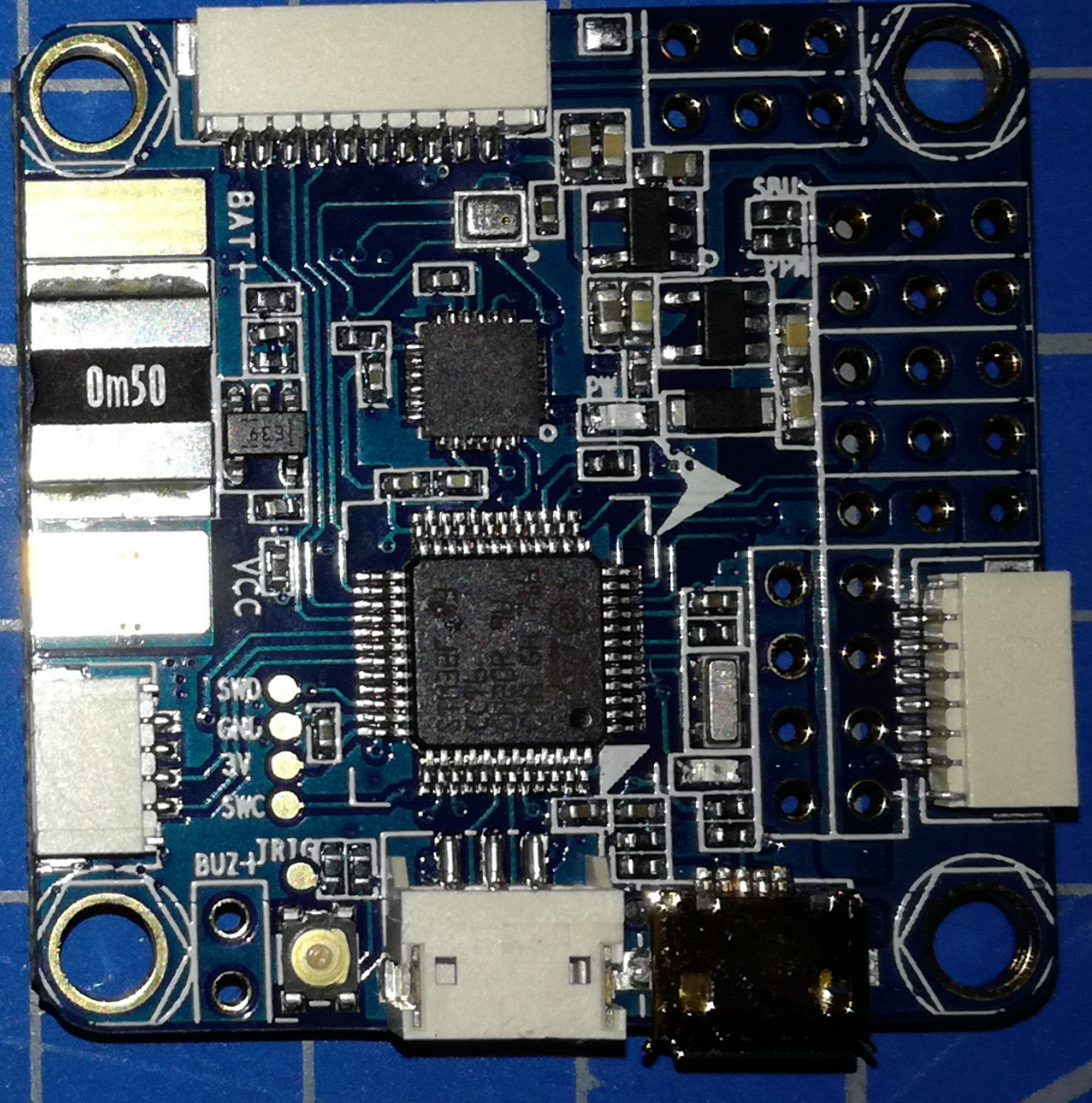
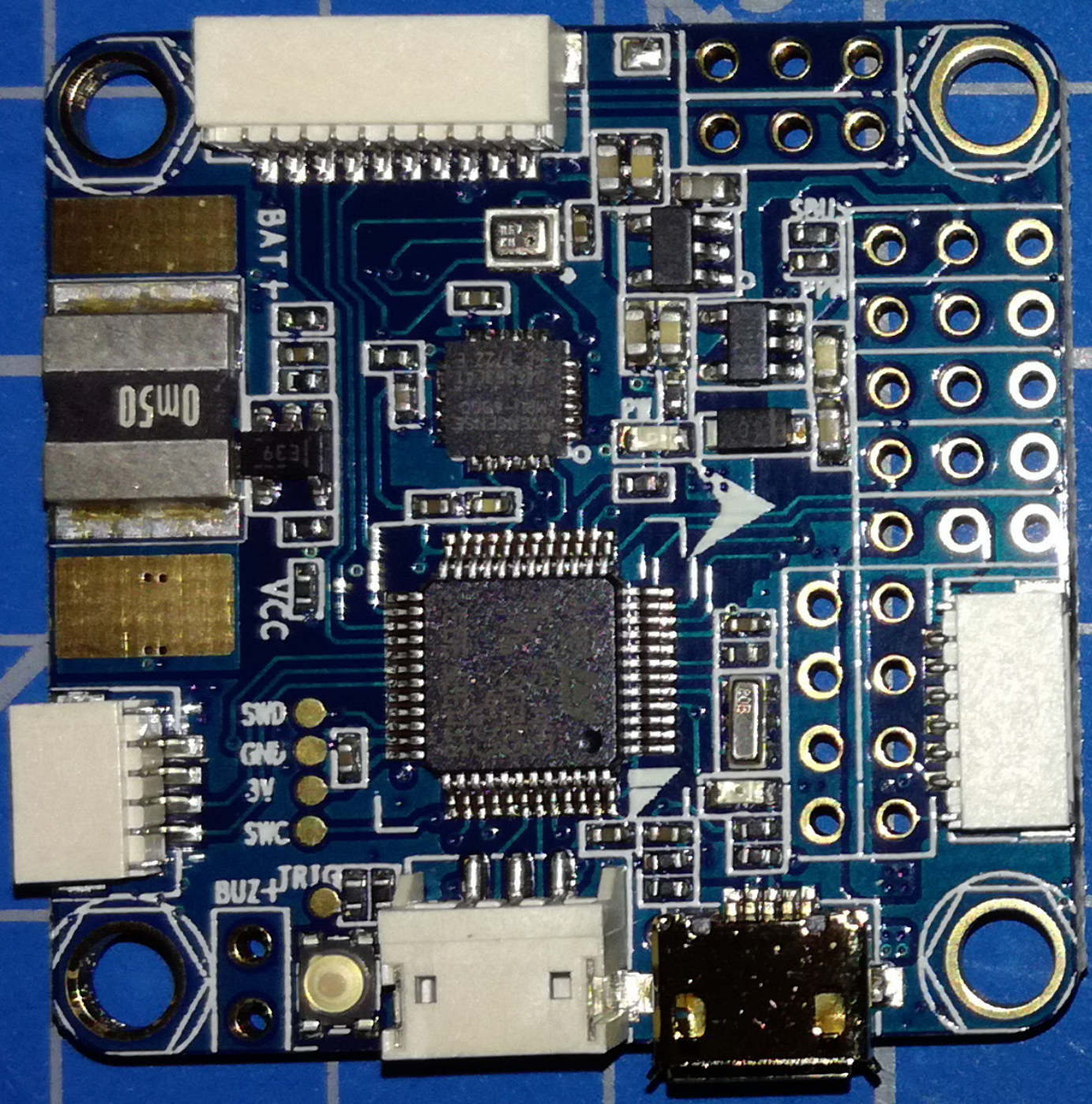


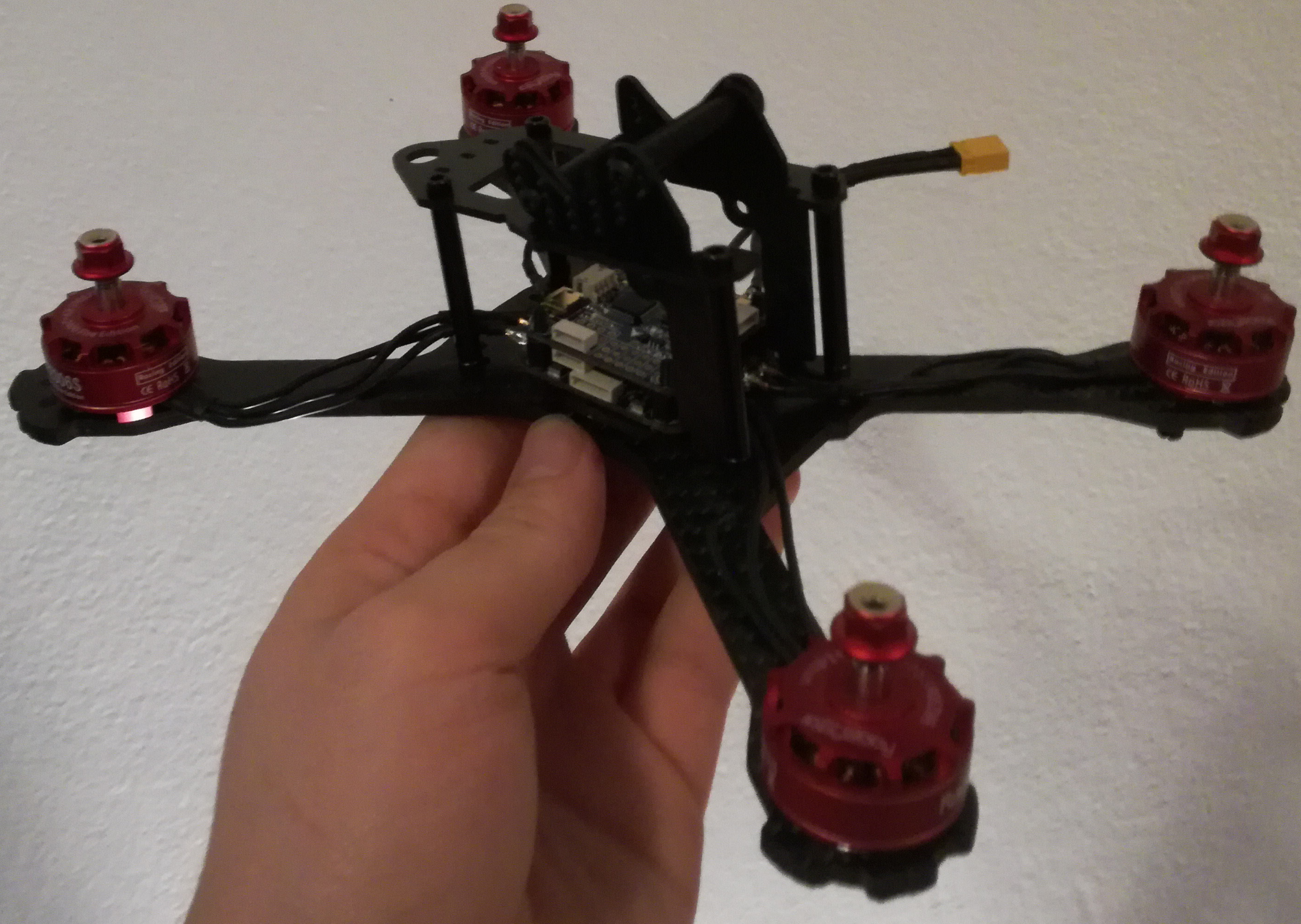












DAKUJEM_VAM_ZA_POZORNOST